

SEIZE

YOUR

FUTURE



**City College Plymouth**  
Kings Road Centre Devonport,  
Plymouth, PL1 5QG

EN Website: [www.cityplym.ac.uk](http://www.cityplym.ac.uk)  
CH Website: [www.ccpifp.com](http://www.ccpifp.com)

Please check out our social media page.

- |           |   |                        |   |              |   |              |
|-----------|---|------------------------|---|--------------|---|--------------|
| Malaysia  |  | PDVL Overseas Advisory |  | pdvlmalaysia |  | PDVL Channel |
| Indonesia |  | pdvlindonesia          |   |              |   |              |
| Taiwan    |  | PDVLTaiwan             |  | pdvltaiwan   |   |              |
| Vietnam   |  | PDVL Vietnam           |  | pdvlvietnam  |   |              |
| Bangkok   |  | PDVL Bangkok           |   |              |   |              |

A Guide For International Student 2021-2022

## SOME FACTS



#3rd Student Satisfaction  
(FE Choices 2019)  
in the UK



89.7% Employer Satisfaction  
(FE Choices 2019)



648 Employees



Awarded TEF GOLD for  
Higher Education Provision  
(Teaching Excellence Framework 2017)



12,449 Number of Students  
Including 604 Higher Education Students  
& 145 Non-EU International Students



Ofsted Rated 'Good' with  
Outstanding Features (2016)

## ABOUT The College

City College Plymouth (CCP) is a tertiary institution and further education college in South West England based at Kings Road, Devonport, Plymouth. The Kings Road Centre is built on the site of the former Devonport Kings Road railway station. It is also a partner college of the University of Plymouth. The college was formerly known as Plymouth College of Further Education and was officially renamed on 1 January 2007.

City College Plymouth is a large government-funded college rated as "Good with outstanding features" by Ofsted (2016). It was established in 1889 and offers high quality courses accredited by QAA, Ofsted and other accrediting bodies in the UK. The College offers a wide range of courses at different levels, from business to engineering, pre-university to professional level. The College is focusing particularly on STEM subjects (Science, Technology, Engineering, Maths) with a new STEM building which opened on site in September 2017.

The College offers some courses in partnership with University of Plymouth and works together with them closely on academic and international projects, ensuring a smooth progression for students. Employability skills are considered a fundamental component in the education and training at City College Plymouth.

## CONTENTS

City College Plymouth	1
City of Plymouth	3
Recommended Programme	7
Pathway Progressions	8
University Bridging Programme	9
Premier International Year One	13
Accommodation	15
Our Activities	18
Our Alumni	21
Visa, Fees and Application	23
Packages Available	25
Entry Requirements	26

## WHY

## CITY COLLEGE PLYMOUTH?

- ★ Partner college of University of Plymouth.
- ★ Opportunity for all: To prepare for University or employment.
- ★ Lower cost of living.
- ★ Affordable: Lower tuition fees compared to university foundation programmes and private colleges.
- ★ Diverse mix of nationalities amongst international students.
- ★ Safe, clean environment.
- ★ Wide range of affordable accommodation options available for students.
- ★ Great location which is near to the sea and countryside.
- ★ Excellent leisure facilities available, particularly for water sports.
- ★ International office provides a friendly and comprehensive service.



# PLYMOUTH

## Britain's Ocean City



Plymouth is located in the beautiful south-west of England which has a population of 275,000. It is easy to reach from London, either by train (approximately 3 hours) or coach (approximately 5 hours). It is famous for its maritime history and it has one of the most beautiful natural harbours in the world. As a coastal city, it is surrounded by miles of dramatic coastline and beaches.

It is an ideal location for both learning and leisure, with plenty of quiet study spaces and recreational opportunities. The city has many modern amenities with large shopping malls that are easily accessible and cater to students' needs. The city and campus location allow for students to enjoy one of the most convenient student lifestyles available in the UK, whilst also at relatively low cost.



# GETTING TO PLYMOUTH



## FROM LONDON



Approximately 3 Hours



Approximately 5 Hours



### From London Heathrow Airport

All major airlines fly between South East Asia and London Heathrow Airport.

Students may take direct National Express coach from Terminal 2/3 to Plymouth and it takes around 4 hours 30 minutes with the approximate cost of £35.

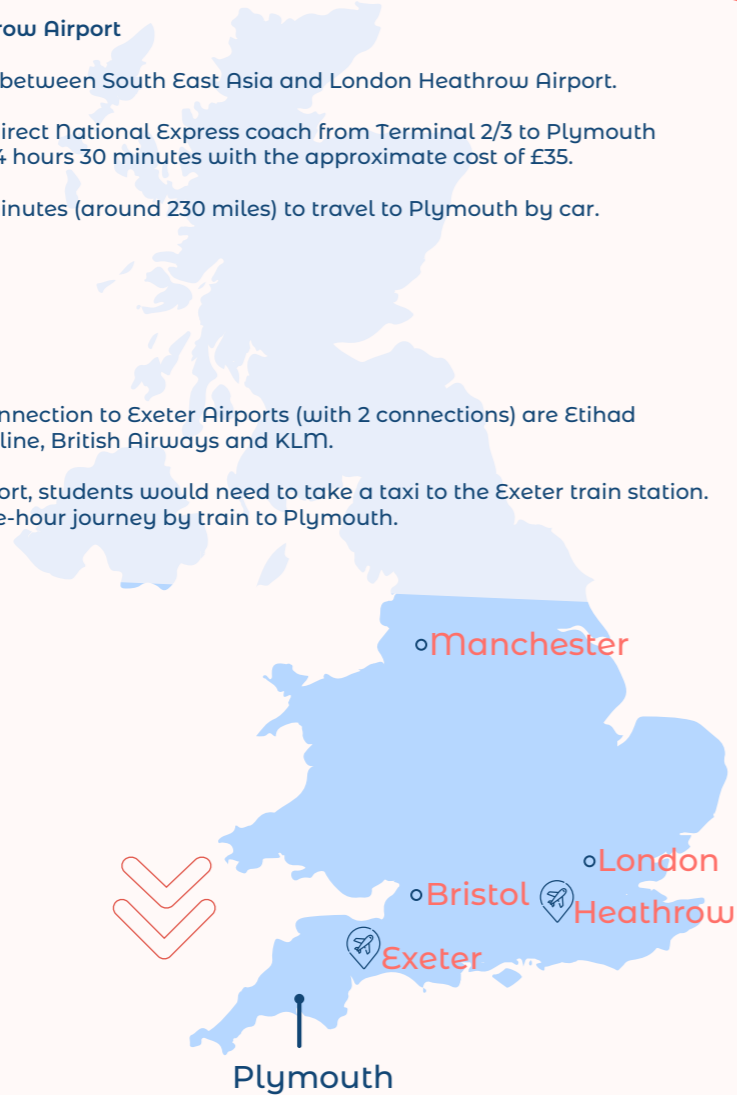
It takes 3 hours 30 minutes (around 230 miles) to travel to Plymouth by car.



### From Exeter Airport

Airlines that have connection to Exeter Airports (with 2 connections) are Etihad Airlines, Emirates Airline, British Airways and KLM.

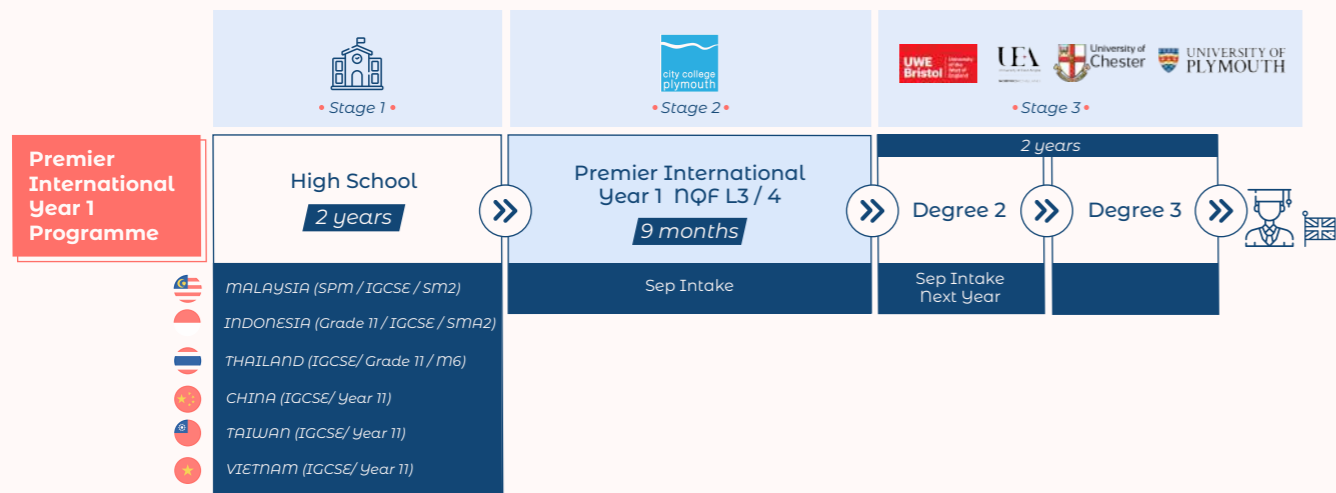
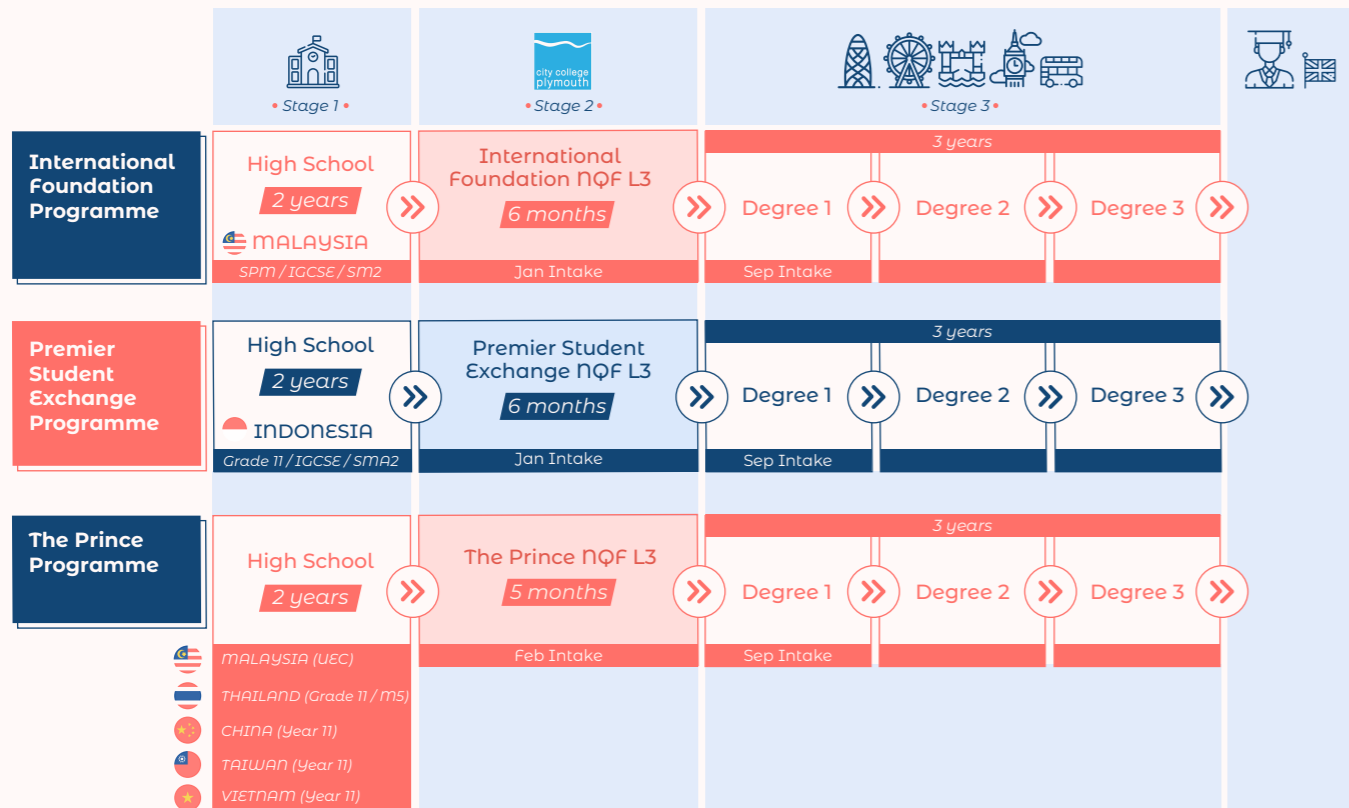
From the Exeter Airport, students would need to take a taxi to the Exeter train station. From there, it is a one-hour journey by train to Plymouth.



# RECOMMENDED PROGRAMME

Have no idea what programme to choose? Check out the diagrams below

**PLEASE NOTE**  
We have a wide range of international qualifications for entry requirements, kindly see page 26 for more details.



# PATHWAY PROGRESSIONS



## Science Pathway

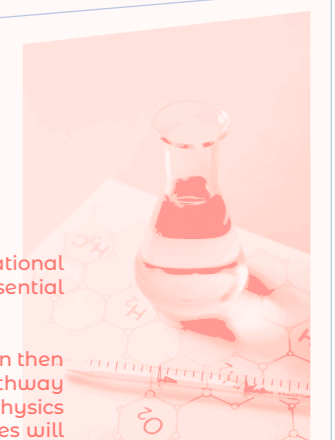
The Science Foundation Programme is an intensive course designed to prepare international students for progression onto science-based undergraduate degrees. It combines essential theoretical knowledge with practical laboratory experience.

With Chemistry and Advanced Maths as the core compulsory pathway subjects, students can then choose either Biology or Physics depending on their desired progression. The Biology pathway leads to biology related courses such as Pharmacy and Bio-medical Sciences whereas the Physics pathway would be suitable for progression to engineering and IT courses. Additional charges will be added for students to include both Biology and Physics in the science pathway.

The Science Foundation offers multi-exit progression to different universities and also to other non-science related courses.

• Academic Contents •

Modules	International Foundation Programme	Premier Student Exchange Programme	The Prince Programme
Biology	Choose	Choose either	✓
Physics	one	one / both	✓
Chemistry	✓	✓	✓
Advanced Maths	✓	✓	✓
English for Academic Purposes	✓	✓	✓
Maths	✓	✓	✓
Academic Skills	✓	✓	✓



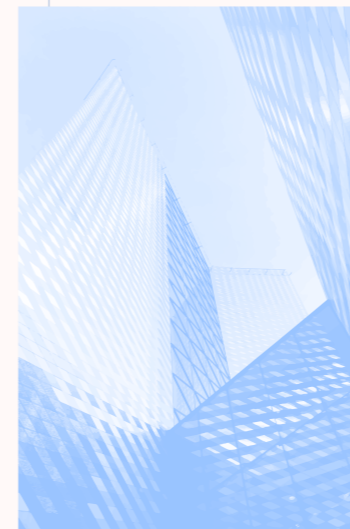
## Business Pathway

The Business Foundation Programme at City College Plymouth covers every aspect of the business world, from the basic understanding of business to accounting, finance, and economics.

With additional support from the college academic team and welfare team, City College Plymouth graduates will be equipped with the practical skills and knowledge equivalent to pre-university programmes (A Levels, Foundation) required to further their studies in business and other relevant subjects at university level.

• Academic Contents •

Modules	International Foundation Programme	Premier Student Exchange Programme	The Prince Programme
Economics	✓	✓	✓
Accounting and Finance	✓	✓	✓
Understanding Business	✓	✓	✓
English for Academic Purposes	✓	✓	✓
Maths	✓	✓	✓
Academic Skills	✓	✓	✓



# UNIVERSITY BRIDGING PROGRAMME

City College Plymouth's Programmes and Courses have been specifically designed as a pathway to higher education in the UK for international students (non-EU and EU). Students from countries with 12-year education system will need to take a Foundation course year before applying to most universities in the UK.

## International Foundation Programme



### Key Facts

**NQF Level:**  
Level 3 (Pre-University Level)

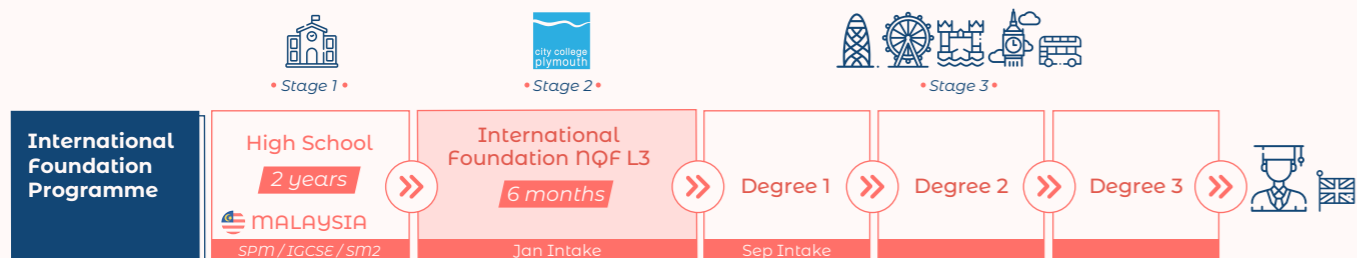
**Class Size:**  
Class size is around 15 to 20

**Class Hours:**  
Minimum 21 hours per week

**Durations:**  
24 Weeks

**Entry Requirements:**  
At least 5 credits in your secondary school result including English and Maths. Kindly check page 26 for more info.

**English Requirements:**  
Minimum IELTS score of 5.0 or other equivalent qualifications.



### Key Facts

**NQF Level:**  
Level 3 (Pre-University Level)

**Class Size:**  
Class size is around 15 to 20

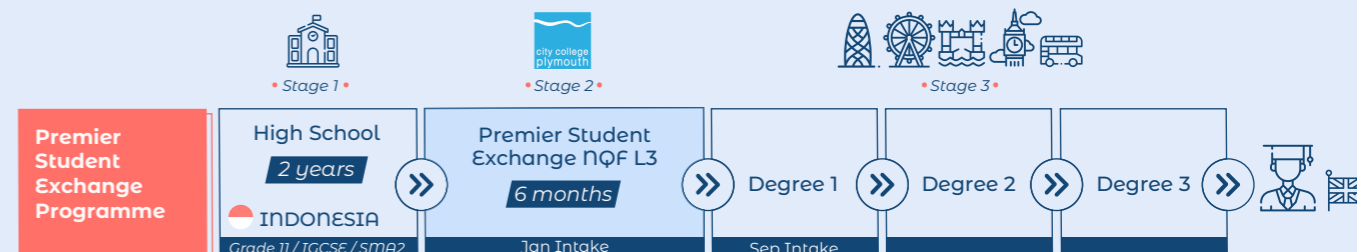
**Class Hours:**  
Minimum 21 hours per week

**Durations:**  
24 Weeks

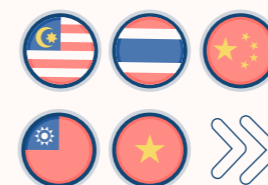
**Entry Requirements:**  
At least 5 credits in your Grade 11 1st semester result including English and Maths. Kindly check page 26 for more info.

**English Requirements:**  
PASS the CCP's Internal English Test.

## Premier Student Exchange Programme



## The Prince Programme



### Key Facts

**NQF Level:**  
Level 3 (Pre-University Level)

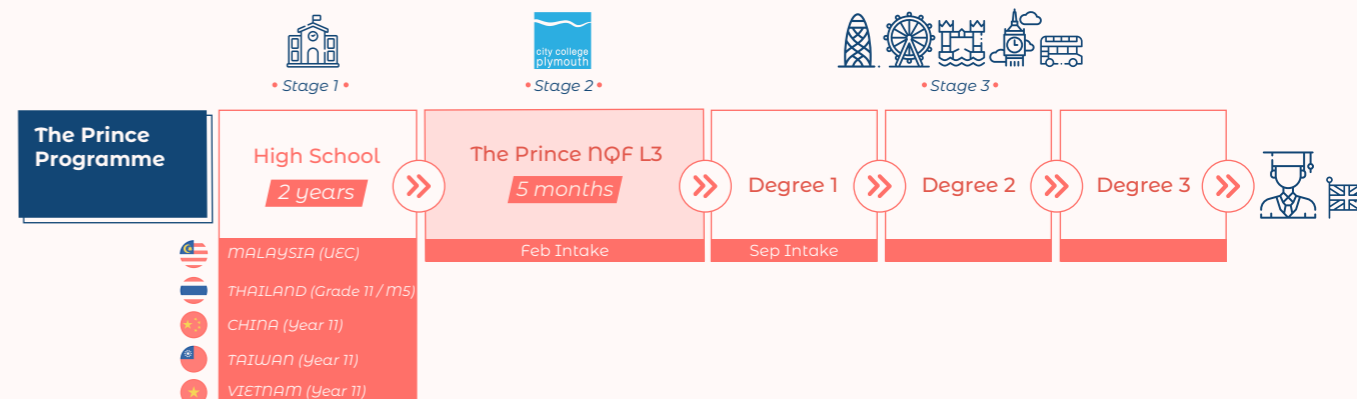
**Class Size:**  
Class size is around 15 to 20

**Class Hours:**  
Minimum 21 hours per week

**Durations:**  
19 Weeks

**Entry Requirements:**  
At least 5 credits in your secondary school result including English and Maths. Kindly check page 26 for more info.

**English Requirements:**  
PASS the CCP's Internal English Test.



# DEGREE YEAR 1

## University Placement

We handle all placements for students recruited through consultants. All applications will be submitted through UCAS. Placement starts from the 1st week of April every year and all consultants will be meeting students during the Easter Holiday on a one-to-one basis to discuss university placements.

## Progression Benchmarks

The following universities have a set of benchmarks agreed for entry to different courses. Please refer to your consultants for:

- 📍 University of Plymouth (UK)
- 📍 Queen's University Belfast (UK)

## Official Progression Universities

### University of Essex (UK)

Foundation in City College Plymouth will be accepted into first year degree at the University of Essex with 65% (BBB) except Biomedical or Biochemistry-related programmes. 70% (ABB) for Actuarial Science, and the four integrated Masters programmes in Computer Science, Marine Biology, Electronic Engineering and Telecommunications.

### University of the West of England, Bristol (UK)

Foundation in City College Plymouth will be accepted for entry onto Year 1 of any of the UWE Bristol Degree Programmes on an individual basis with at least a 50% Pass mark overall and 60% in English for Academic purposes.

### BPP University (UK)

Foundation in City College Plymouth will be accepted into BPP's BSc(Hons) Accounting & Finance, BSc (Hons) Business Management and BSc(Hons) Banking & Finance Programme in Year 1.

## Student's Progression Track Record

Students	Degree Course	Progressed University	University Ranking
Sherilyn Esabel Chin Yining	Nutrition	King's College London*	7
Tay Pei Yee	Pharmacy	King's College London*	7
Chan Wee Chiat	Mechanical Engineering	The University of Sheffield*	13
Low Qiao Rou	Business Management with Marketing	University of Birmingham*	14
Mohamad Farhan Chin	Chemical Engineering	University of Birmingham*	14
Chin Qi Hui	International Business with Communications	University of Birmingham*	14
Ho Ming Wei	Chemical Engineering	University of Nottingham*	15
Eric Tang	Aerospace Engineering	University of Leeds*	16
Joseph Guang Zhong Kiu	Civil Engineering	University of Leeds*	16
Claudia Tan Zhi Shyuen	Music	University of Southampton*	17
Celine Lim Shu Wen	Mathematics with Actuarial Science	University of Southampton*	17
Cindy	Business Entrepreneurship	University of Southampton*	17
Mel Johnson Min Juan Lek	Economics	University of Southampton*	17
Daphne Wong Ai Jia	Accounting & Finance	Newcastle University*	22
Chan Sin Min	Biochemistry	Newcastle University*	22
Sylvester Sia	Civil Engineering	Newcastle University*	22
Anson Wong Keat Zhung	Civil Engineering	Cardiff University*	23
Tu Wen Jing	Law	University of Liverpool*	24
Huang Tsuhan	Accounting & Finance	University of Exeter*	25
Li Chun Yau	Mechanical Engineering	Queen's University Belfast*	28
Jimmy Cheng	Law	Queen's University Belfast*	28
Soravit Limpanitawat	Business Management	University of Sussex	32
Tantawat Nardwattawanong	Biological Science	University of East Anglia	36
Shania Susanto	Psychology	University of East Anglia	36
Adem Firdaus	Politics and Psychology	University of Dundee	37
Yong Sheng Wei	Actuarial Science City	University of London	42
Ronnie Rodrigues	Law	University of Essex	43
Nuttaporn Norakim	Financial Mathematics	University of Kent	43
Dixon Chu Sin Khong	Software Engineering with placement	Aberystwyth University	49
Yaw Yi Xie	Business & HR Management	Coventry University	52
Chin Kien Lip	Quantity Surveying	University of Portsmouth	56
Mathilda Bitin	Architecture	University of Plymouth	56
Lai Tsun Hung	Hospitality Management	Bournemouth University	61
Aimi Athirah binti Suhaimi	Accounting & Finance	University of Brighton	66

\* The University Ranking is based on QS UK University Ranking 2019

\*\* This is not a complete list of our students' progression track records, there may be changes of information from time to time. Kindly check with our consultants for the most up-to-date information.



## COURSE ASSESSMENT AND GRADINGS

There is a strong focus on formative assessment, which gradings is supported through a cycle of feedback enabling students to progress through sets of skills in order to become confident, independent learners within a British higher educational environment.

Summative assessment may take the form of examinations, essays and shorter pieces of assessed work, individual and group presentations in addition to research projects.

Progression is recognised in the assessment scheme, which tests cognitive skills, moving from understanding and explaining simple concepts through to synthesising and evaluating arguments.

### Gradings

Pass marks for each summative assignment will be awarded as follows:

- » Pass 40-54%
- » Pass with Merit 55-69%
- » Pass with Distinction 70% +

### Overall Classification

For University Bridging Programme, the overall classification will be determined by final scores in relation to their weighting of the specific modules.

For PIY1, resit opportunities will be granted according to BTEC and University of Plymouth assessment conditions. Progression routes are to be determined by consultants.

# PREMIER INTERNATIONAL YEAR ONE (PIY1)



## Key Facts

- NQF Level:**  
Level 4 Equivalent UG Year 1
- Class Size:**  
Class size is around 15 students
- Class Hours:**  
Minimum 21 hours per week
- Durations:**  
41 Weeks
- Entry Requirements:**  
At least 5 credits in your secondary school result including English and Maths. Kindly check page 26 for more info.
- English Requirements:**  
UKVI IELTS score of 5.5 and above for direct entry.

## Business Management

### About the Course

Premier International Year One (PIY1) is a blended Level 3/4\* programme, offering high-achieving international students a challenging accelerated programme over one academic year. This is an intensive and demanding programme which will develop academic knowledge and English language skills to prepare for progression to the second year of named undergraduate programmes in Business at a select group of UK universities on successful completion. Individual universities may specify certain criteria for progression.

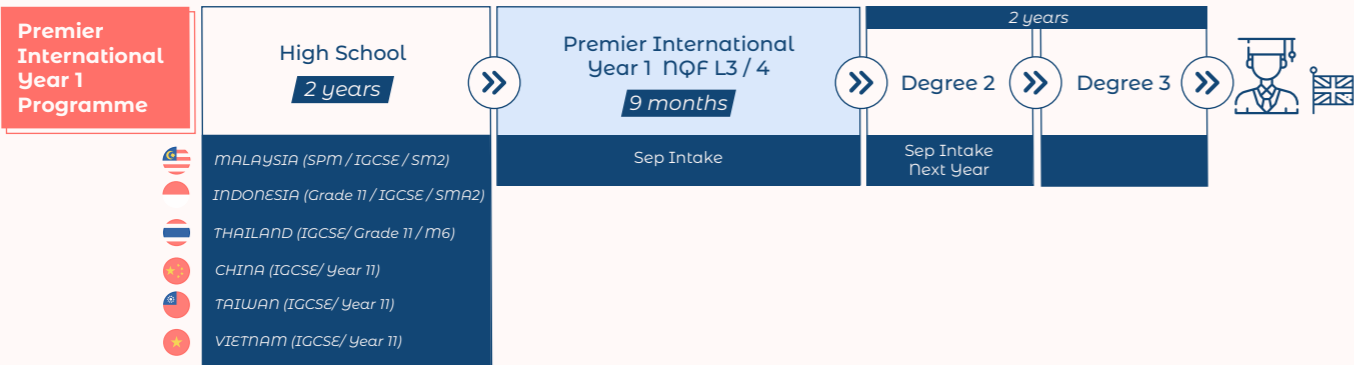
\* Level 3 is equivalent to A Levels / Foundation and Level 4 is equivalent to the first year of an undergraduate programme in the UK.

### Academy Contents

Modules
Exploring Business
Business Resources
Team Building in Business
Organisational Behaviour
Economic Environment for Business
Business Finance
Managing Knowledge & Information
Marketing
English for Academic Purposes / IELTS
Transitional Studies

### Important Notes

**Pre-sessional English**  
Students with a UKVI IELTS score **below than 5.5 and with a minimum of 5.0** must attend the Pre-sessional English programme. Students will be allocated a twin room with host accommodation. Once they've completed the Pre-sessional English, students will then move to their preferred accommodation before the PIY1 commences.



## DEGREE YEAR 2

Students will be able to progress to our partner universities Year 2 courses as stated in the following.

**PLEASE NOTE**  
There will be some official articulation updates from other universities from time to time, please do ask your consultant for the latest universities progression list.



- BSc Accounting and Finance
- BSc Accounting and Management
- BSc Business Finance and Management
- BSc Business Management
- BSc Marketing and Management

**Requirement:**  
- Overall pass with 60% of PIY1  
- IELTS scored of 6.5, with no less than 6.0 in each component



- BSc Business Management
- BSc Human Resource Management
- BA International Business
- BA International Business Economics
- BA International Management

**Requirement:**  
- Overall pass with 60% of PIY1  
- Pass EAP 60% can get IELTS waived



- BA Business Finance
- BA Business Management
- BA Business Management with Entrepreneurship
- BA Business Management with HR
- BA Business Management with Marketing
- BA Events Management
- BA Hospitality Management
- BA International Business Management
- BA International Tourism Management
- BA Marketing Management

**Requirement:**  
- Overall pass with 50% of PIY1  
- Pass EAP 60% can get IELTS waived



- BA Business and Management
- BA Business and Human Resource Management
- BA Business Management with Accounting & Finance (5-6 papers exemption)
- BA Business Management and Economics
- BA Business Management with Marketing
- BA Business and Events Management
- BA Business Management with Leaderships

**Requirement:**  
- Overall pass with 50% of PIY1  
- Pass EAP 60% can get IELTS waived





# ACCOMMODATION OPTIONS



## Student's Living

There are various types of accommodations available from student halls of residence to private houses, all aimed at making it as easy as possible for you to choose the best option for your lifestyle while you study with us. Please bear in mind that meals and laundry are not included in accommodation packages other than host family accommodations.



Our accommodations are normally inclusive of:

- .. 3 Meals per day \*Only available for host accommodation
- .. Laundry services \*Only available for host accommodation
- .. Free Internet access at host accommodation
- .. Utilities bill (Electricity / Gas / Water)
- .. Free college bus from City Centre to college

## Important Notes

If you are under the age of 18, we will place you with a family, unless your parents provide written consent for you to live independently in another type of accommodation. If host family accommodation is no longer available when you apply, you will be offered a Hall of Residence or a room in a shared student house. Your first choice of accommodation may not always be available, so please check with our consultants for the availability of your preferred accommodation.

If you have difficulties while in your accommodation, please speak directly to your landlord or hostfamily where you are staying first. If you are unable to do this, or need further help, contact the consultant who will provide advice and guidance.



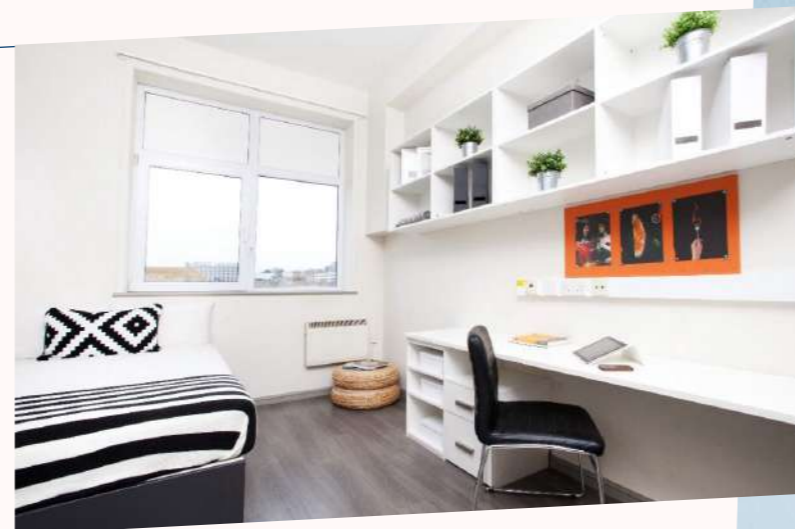
#### Host Accommodation Single Room / Twin Room

You can get the most out of living in UK by staying in a host accommodation in either a single room or twin room. All our homestays are carefully inspected and selected by the college.

They have been working with CCP for years and enjoy the chance to meet students from different countries. Many of our students have formed long-term friendships with their homestay hosts even after leaving the school behind.

#### Single Ensuite

Our hall rooms offer a private bathroom dedicated to each individual study bedroom. All hall rooms are single rooms and are fully furnished. It is in a flat of mixed individual students, most of whom are international students and all booked the rooms on an individual basis.



#### Studio

A studio is a self-contained bedroom with a bathroom and its own cooking facilities. Studios are located in privately owned student halls-of-residence. The benefit of this type of accommodation is that your space is private and you do not have to share any facilities with other students.



**OUR**  
**ACTIVITIES**

1



**Mini Education Fair**

In March, CCP organised a mini edu-fair at City College Plymouth. We invited more than 10 UK universities to participate in the event. This event is specifically arranged for CCP students to learn more about their progression to UK higher education institution.

During the event, some universities offered special scholarships for our CCP students and provided them with information on how to apply.

2



**FAM Trip**

This event has become an annual activity for schools who have already signed MOU with CCP. Our invited delegates are either counsellors or principals from high schools in Malaysia, Thailand, Indonesia, Vietnam, China and Taiwan. They have all been cordially invited to attend a conference at the College and also, they get to see the real facilities and teaching standards at CCP while their students are studying with us.

3



**Graduation Dinner**

This ceremony celebrates the accomplishments of the graduating students from City College Plymouth. Graduation certificates are awarded during the graduation dinner.

4



**University Tour**

In order to help students with their choice of UK university, CCP organizes some short trips to specific universities for all CCP students. We understand it is always hard to describe how amazing some universities campus facilities are, so we organise these trips to allow our students to experience firsthand the campus, facilities and teaching.

Last year, we visited quite a number of universities such as Aberystwyth University, University of Plymouth, University of Portsmouth, Coventry University, University of East Anglia, University of Chester, University of Southampton, Solent University, Liverpool John Moores University, St. Mary's University Twickenham London and University of the West of England, Bristol.

5



**Guest & Lecture**

Every year, CCP assigns a teacher from the college to travel to Asia to demonstrate the British style teaching in our MOU partnered high schools. This event has been running very successfully for several years especially in Malaysia and it gives Asian students a genuine experience of British education from a UK government college.

Usually this event takes place in mid March or early April and we would like to expand this to countries outside Malaysia in the future. In addition, CCP also invites some professional lecturers from UK universities to give guest lectures on different popular topics such as Law, Engineering, Actuarial Science, Business etc.

# OUR ALUMNI

## Hear what they say...

Here are what some of our graduates have to say about their experience at City College Plymouth. ”



**Kamalia Maisarah Binti Norman**  
IFP- Business Pathway  
SM Sains Muar, Johor, Malaysia



One word to describe about my experience with this program is amazing (that's the best word I have in my dictionary, if there's any better words than amazing, then I would use that).

Overall, I really really really recommend you to go for it! I promise that you will have such a great experience and memory to keep!

Not only you learn independency, but you are going to make so much great moments! I recommend you to bring a camera if you have or make sure your phone has a big space of memory card, because I want you to record every moments from the first day of going to Plymouth so that you will not regret like me. You're gonna miss every moment you had. ”



**Valeryan Alexander Franscesco**  
Premier Students Exchange Programme  
- Business Pathway  
St. Peter School, Jakarta



When I started my journey six months earlier, I had many doubtful thoughts about how can I survive overseas without my parents' support. UK was the first country that I would be living on my own. Although I knew this chance that I took was for my own good, I was really scared that time. However as time goes by, I realized that in Plymouth, nice city in the big country as UK was an unregretful idea of mine. I was surrounded by a lot of marvellous experiences and nice people. They are really helpful, nice and fun. Especially my classmates, they're really fun and lively. We spent a lot of time together and I rejoiced every moment with them. ”



The word 'New' totally describes my experience in Plymouth with City College Plymouth. The class gives off a positive atmosphere. With the class so small, I feel comfortable clearing my doubt with the teachers. The school will expose you with the new teaching methods used in the UK's university. The calming environment in Plymouth is really suitable for you to reflect on yourself, of course we sometimes feel confused especially in a totally new country. It gives you time to rethink of the passion you want to pursue and organize your thoughts.

Overall, a good place to prepare yourself for university. I have find myself some new amazing friends there. We are even still in contact up until today. No matter the race or the religion, towards the end of the course we became inseparable. ”



**Nuttaporn Norakim**  
The Prince Programme- Science Pathway  
Changkat Changi Secondary School, Singapore



**Calista Emily**  
Premier Students Exchange Programme  
- Science Pathway  
MA St. Thomas 1 Medan, Indonesia



When I reflect on my six months in City College Plymouth Premier Student Exchange Programme, I conclude that the experience not only made me a better person, but also prepared me in unpredictable ways for my future career. Through projects with incredibly supportive classmates and lecturers, also my host family, I was challenged to discover a new voice that I didn't know I had. A new voice that has played a role in helping me to think, plan, communicate and engage myself better in various situations. Having been shaped in part by the creative and lively, yet very distinct (in contrast to Indonesia) environment at Plymouth, I found myself feeling more confident in the abilities that I have inside. CCP has given me the best educational experience I have had. ”

# VISA AND FEES



## Visa

### Do I need visa ?

Students from a Commonwealth country will be granted a short term student visa upon arrival. Students not in that category will need to apply for a short term student visa in their home country.

However, it is mandatory to apply for a Tier 4 General Student Visa if your intended course of study is longer than 6 months.

### What documents do I need to show when I enter the UK ?

Document packs will be prepared by consultant to ensure students are well-prepared. Documents pack includes confirmation letter from college confirming payment and study placement, return flight tickets and other relevant documents.

### Do we have to buy Health Insurance for the student ?

Not compulsory but recommended.

### What documents do I need to show when I enter the UK ?

According to the Home Office regulations, the living cost for a British student is calculated on a monthly basis. The exact number depends on the location. Plymouth belongs to a city outside of London, and the cost of living is calculated at £1,015 per month.

If your study duration is about 9 months, you are encourage to provide a living allowance deposit based on the actual number of months which is an estimated of  $£1,023 \times 9 = £ 9,207$ . This figure is for guidance only. As the exchange rate fluctuates, it is recommended to save slightly more than the estimated amount in order to pass the visa review.

## Fees

### How do I pay my fee ?

You may pay your tuition fee via online bank transfer to the college. Full payment is required before the stated deadline for each programmes as shown at page 25.

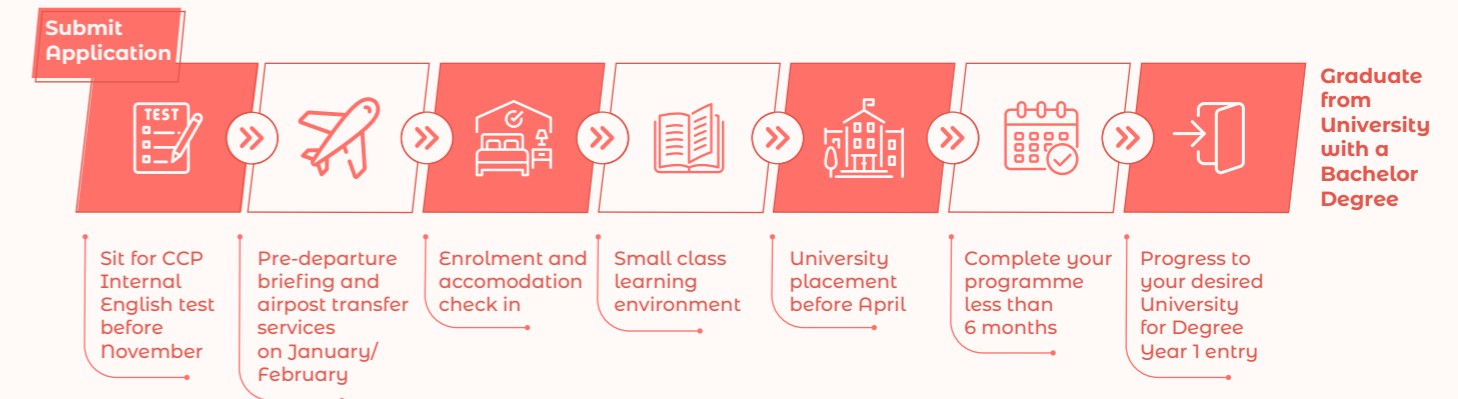
### Is there an instalment plan ?

Yes, instalment plan is applicable for all countries. There will be a £ 4,000 non refundable deposit. All transactions made are subject to £ 20 UK Bank Charges per transaction.

# START YOUR JOURNEY

## University Bridging Programme

International Foundation Programme / Premier Student Exchange Programme / The Prince Programme

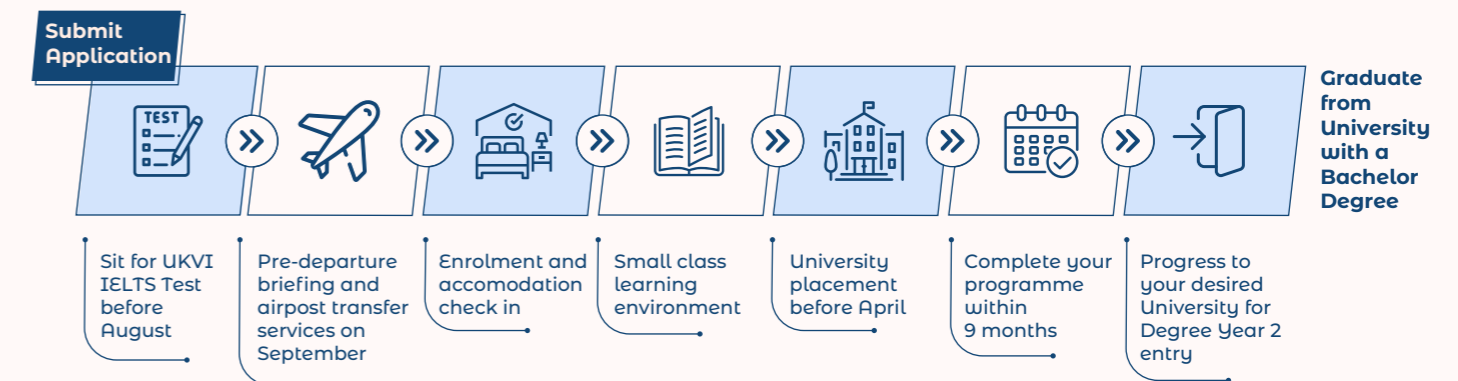


## How to Apply?

To start your application with ease, we will need the following documents:

- Passport (Front Page)
- School report / Forecast result / Actual result transcript

## Premier International Year One



## How to Apply?

To start your application with ease, we will need the following documents:

- Passport (Front Page)
- School report / Actual result transcript
- UKVI IELTS result

# PACKAGES AVAILABLE

We encourage students to apply as early as possible because the accommodation is allocated on a first-come, first-serve basis and your first choice may not be available if you apply late.

Programmes	Regions	Weeks	Accommodation Date	Packages Available			
				Twin Room	Single Room	Single Ensuite	Studio
International Foundation Programme (IFP) **	Malaysia	24	21 Jan 2022 - 08 July 2022	☑	☑	☑	☑
Premier Student Exchange Programme **	Indonesia	24	21 Jan 2022 - 08 July 2022	☑	☑	☑	☑
The Prince Programme **	All regions	19	25 Feb 2022 - 08 July 2022	☑	☑	☑	☑
Premier International Year One (PIY1)	All regions	n/a	n/a	n/a	n/a	☑	☑
Pre-sessional English <i>* Applicable for PIY1</i>	All regions	n/a	n/a	☑	n/a	n/a	n/a

\* All programmes and course are inclusive of airport pickup (Return airport transfer from Heathrow Airport)

\*\* IELTS examination fee is included and to be taken during study

# START DATE

Programmes	Regions	Weeks	Start Date	End Date	Application Deadline
International Foundation Programme (IFP) **	Malaysia	24	24 Jan 2022	08 Jul 2022	15 Oct 2021
Premier Student Exchange Programme **	Indonesia	24	24 Jan 2022	08 Jul 2022	15 Oct 2021
The Prince Programme **	All regions	19	28 Feb 2022	08 Jul 2022	15 Nov 2021
Premier International Year One (PIY1)	All regions	n/a	n/a	n/a	n/a
Pre-sessional English <i>* Applicable for PIY1</i>	All regions	n/a	n/a	n/a	n/a

# ENTRY REQUIREMENTS

## International qualifications

We consider a wide range of international qualifications for entry to our courses. Kindly refer to the qualification equivalences table below or speak to your consultant.

Programmes	Regions	Academic Requirements	English Requirements
International Foundation Programme (IFP) **	Malaysia	Secondary School - at least 5 C's in SPM / SM2 / IGCSE (Including English and Maths) <b>Or</b> other equivalent qualification.	Minimum IELTS score 5.0 in overall with no less than 4.5 score in any component <b>Or</b> equivalent of a recognised qualification
	Indonesia	Secondary School - at least 5 C's in SMA 2 / Grade 11 (Including English and Maths) <b>Or</b> other equivalent qualification.	Successful completion of City College Plymouth's Internal English Written Test and Interview.
The Prince Programme **	Malaysia (UEC Students only)	Chinese Secondary School - at least 5 C's in SM2 (Including English and Maths) <b>Or</b> other equivalent qualification.	Minimum IELTS score 5.0 in overall with no less than 4.5 score in any component <b>Or</b> equivalent of a recognised qualification
	Thailand	Secondary School - at least 5 C's in M5 (Including English and Maths) <b>Or</b> other equivalent qualification.	Successful completion of City College Plymouth's Internal English Written Test and Interview.
	China / Vietnam	Secondary School - at least 5 C's in Year 11/12 (Including English and Maths) <b>Or</b> other equivalent qualification.	Successful completion of City College Plymouth's Internal English Written Test and Interview.
	Taiwan	Secondary School - at least 5 C's in Year 11/12 (Including English and Maths) <b>Or</b> other equivalent qualification.	Successful completion of City College Plymouth's Internal English Written Test and Interview.
Premier International Year One (PIY1)	Malaysia	Secondary School - at least 5 C's in SPM / SM2 / IGCSE (Including English and Maths) <b>Or</b> other equivalent qualification.	UKVI IELTS score of 5.5 and above in overall with no less than 5.0 score in any component for direct entry to PIY1 UKVI IELTS with minimum score of 5.0 will need to attend a 3 weeks Pre-sessional English Course before PIY1 starts.
	Indonesia	Secondary School - at least 5 C's in SMA 2 / 3 / Grade 11/12 / IGCSE (Including English and Maths) <b>Or</b> other equivalent qualification.	
	Thailand	Secondary School - at least 5 C's in M5 / 6 / Grade 11/12 / IGCSE (Including English and Maths) <b>Or</b> other equivalent qualification.	
	China / Vietnam	Secondary School - at least 5 C's in Year 11/12 / IGCSE (Including English and Maths) <b>Or</b> other equivalent qualification.	
	Taiwan	Secondary School - at least 5 C's in Year 11/12 / IGCSE (Including English and Maths) <b>Or</b> other equivalent qualification.	